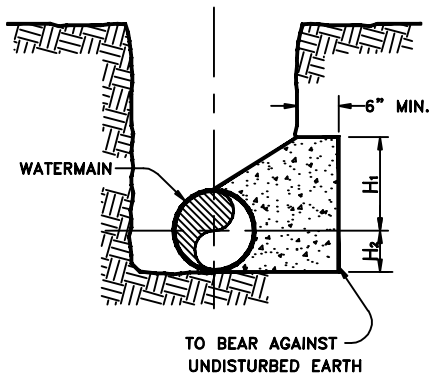


SECTIONAL PLAN



SECTION A-A

HORIZONTAL THRUST BLOCK

HORIZONTAL THRUST BLOCK				
PIPE DIA.	H₁	H₂	L	HPI ANGLE (DEGREES)
				UP TO CL 25
6"φ & 8"φ	9"	9"	2'-0"	5'-16'
	9"	9"	4'-0"	17'-32'
	9"	9"	6'-0"	33'-49'
	2'-0"	1'-0"	5'-0"	50'-70'
12"φ	2'-0"	1'-3"	7'-0"	71'-105'
	1'-0"	1'-0"	2'-0"	5'-11'
	1'-0"	1'-0"	4'-0"	12'-23'
	1'-0"	1'-0"	6'-0"	24'-36'
	3'-0"	1'-6"	4'-0"	37'-42'
16"φ	3'-0"	1'-6"	6'-0"	43'-66'
	3'-0"	1'-6"	8'-0"	67'-93'
	1'-6"	1'-6"	2'-0"	5'-11'
	1'-6"	1'-6"	4'-0"	12'-24'
	1'-6"	1'-6"	6'-0"	25'-36'
	3'-6"	1'-9"	6'-0"	37'-51'
20"φ	3'-6"	1'-9"	8'-0"	52'-70'
	3'-6"	1'-9"	10'-0"	71'-92'
	1'-6"	1'-6"	3'-0"	4'-11'
	1'-6"	1'-6"	6'-0"	12'-23'
	4'-0"	2'-0"	5'-0"	24'-30'
	4'-0"	2'-0"	7'-0"	31'-43'
	4'-0"	2'-0"	9'-0"	44'-57'
24"φ	4'-0"	2'-0"	11'-0"	58'-71'
	4'-0"	2'-0"	13'-0"	72'-87'
	1'-6"	1'-6"	4'-0"	3'-11'
	1'-6"	1'-6"	8'-0"	12'-22'
	1'-6"	1'-6"	10'-0"	23'-28'
	4'-0"	2'-0"	8'-0"	29'-36'
	4'-0"	2'-0"	10'-0"	37'-45'
	4'-0"	2'-0"	12'-0"	46'-55'
24"φ	4'-0"	2'-0"	14'-0"	56'-65'
	4'-0"	2'-0"	16'-0"	66'-76'
	4'-0"	2'-0"	18'-0"	77'-88'

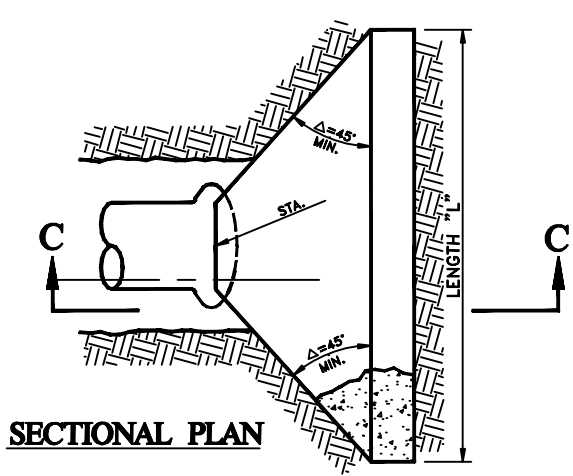
AUGUST 2005

CITY OF CHIND HILLS		Approved by: CITY ENGINEER
Revised: / /	by:	
Revised: / /	by:	
Revised: / /	by:	

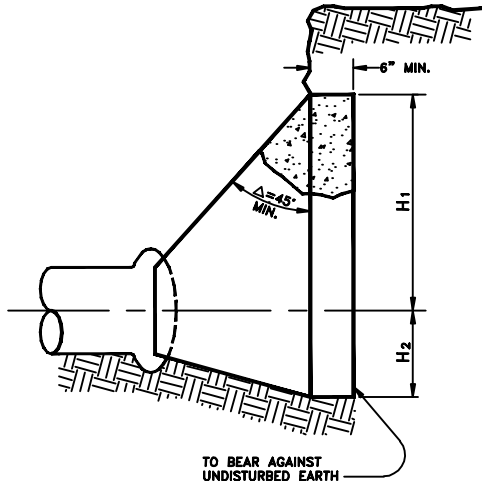
THRUST BLOCKS

W-3

END THRUST BLOCK & TEE THRUST BLOCK			
PIPE DIA.	H ₁	H ₂	LENGTH "L"
			UP TO CL 235
6"φ & 8"φ	2'-0"	1'-0"	4'-0"
12"φ	2'-0"	1'-0"	7'-6"
16"φ	3'-0"	1'-6"	8'-0"
20"φ	3'-6"	1'-9"	10'-0"
24"φ	4'-0"	2'-0"	12'-6"

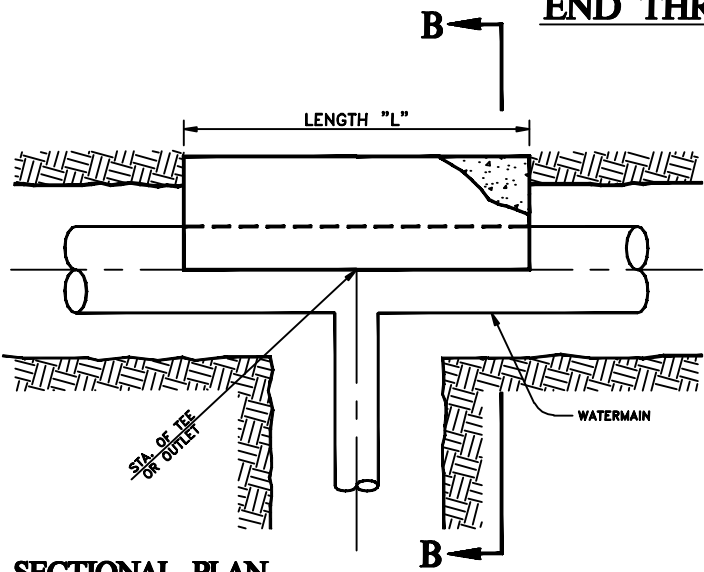


SECTIONAL PLAN

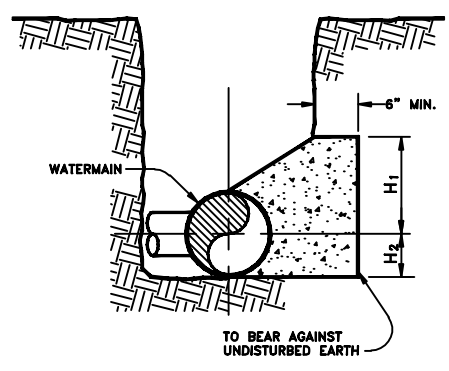


SECTION C-C

END THRUST BLOCK



SECTIONAL PLAN



SECTION B-B

TEE OR OUTLET THRUST BLOCK

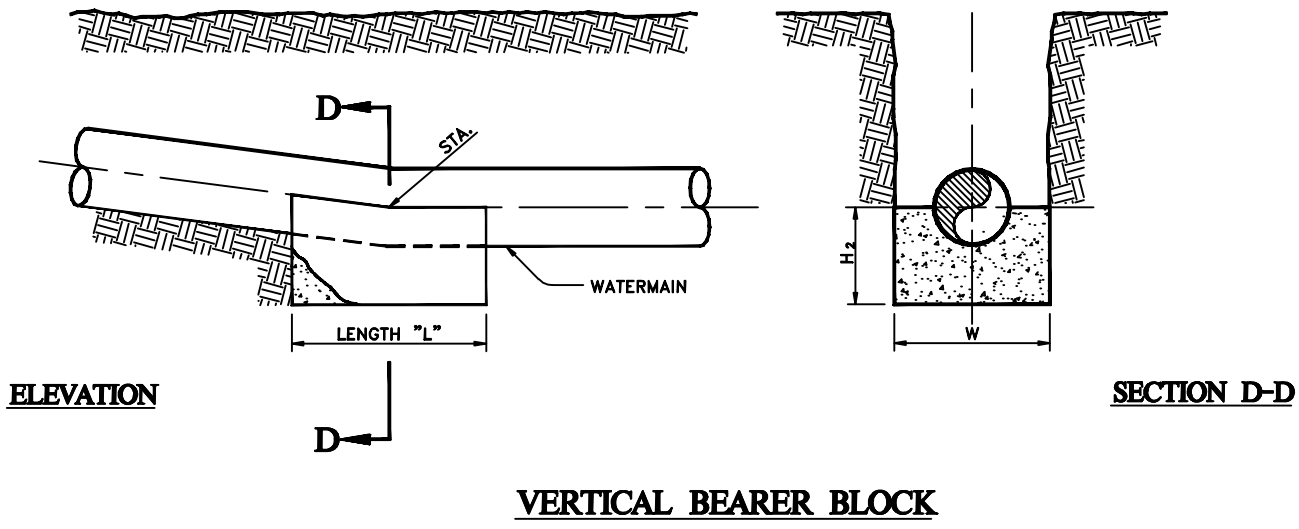
AUGUST 2005

CITY OF CHIND HILLS		Approved by:
Revised: / /	by:	
Revised: / /	by:	
Revised: / /	by:	
		CITY ENGINEER

THRUST BLOCKS

W-3

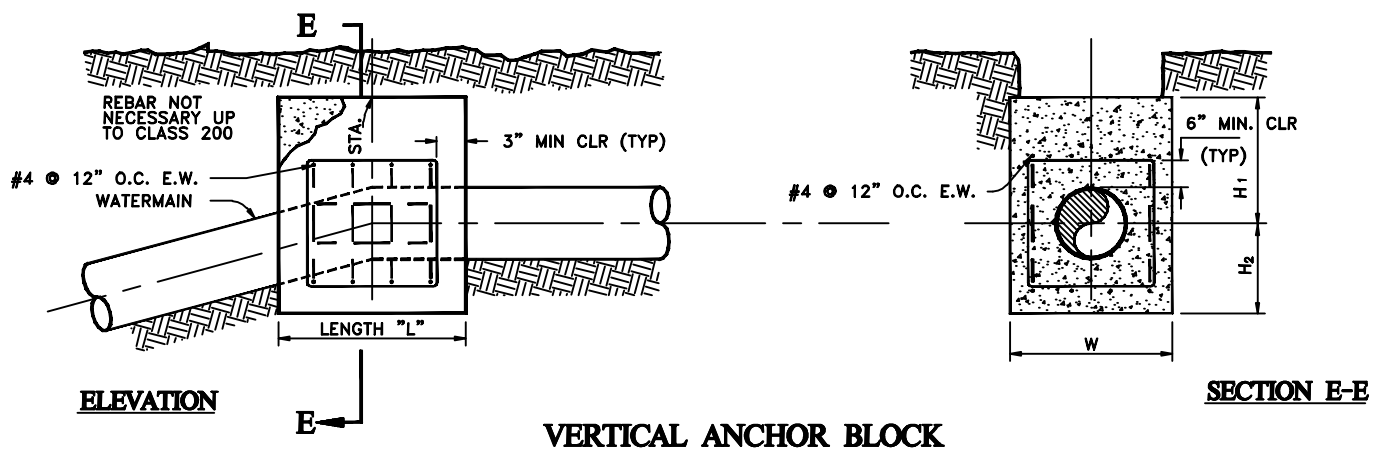
VERTICAL BEARER BLOCK				
PIPE DIA.	H ₂	W	L	GRADE DIFFERENCE (%)
				UP TO CL 235
6"φ & 8"φ	1'-0"	2'-0"	6"	4%-31%
	1'-0"	2'-0"	1'-0"	32%-74%
	1'-0"	2'-0"	1'-6"	75%-202%
12"φ	1'-0"	2'-6"	1'-0"	4%-35%
	1'-0"	2'-6"	1'-6"	36%-57%
	1'-0"	2'-6"	2'-0"	58%-88%
	1'-0"	2'-6"	2'-6"	89%-142%
16"φ	1'-6"	3'-0"	1'-0"	4%-22%
	1'-6"	3'-0"	1'-6"	23%-35%
	1'-6"	3'-0"	2'-0"	36%-50%
	1'-6"	3'-0"	3'-0"	51%-90%
20"φ	1'-6"	3'-0"	4'-0"	91%-201%
	1'-6"	3'-0"	1'-6"	4%-21%
	1'-6"	3'-0"	2'-0"	22%-29%
	1'-6"	3'-0"	2'-6"	30%-38%
	1'-6"	3'-0"	3'-0"	39%-47%
	1'-6"	3'-0"	4'-0"	48%-69%
24"φ	1'-6"	3'-0"	5'-0"	70%-102%
	1'-6"	3'-0"	6'-0"	103%-168%
	1'-6"	3'-6"	1'-6"	4%-17%
	1'-6"	3'-6"	2'-6"	18%-30%
	1'-6"	3'-6"	3'-6"	31%-44%
	1'-6"	3'-6"	4'-6"	45%-61%
	1'-6"	3'-6"	5'-6"	62%-82%
	1'-6"	3'-6"	7'-0"	83%-139%



AUGUST 2005

CITY OF CHIND HILLS		THRUST BLOCKS	W-3	
Revised: / /	by:			CITY ENGINEER
Revised: / /	by:			
Revised: / /	by:			

VERTICAL ANCHOR BLOCK					
PIPE DIA.	H ₁	H ₂	W	L	GRADE DIFFERENCE %
					UP TO CL 25
6" ϕ & 8" ϕ	2'-0"	2'-0"	2'-0"	1'-6"	4%-17%
	2'-0"	2'-0"	2'-0"	2'-6"	18%-30%
	2'-0"	2'-0"	2'-0"	3'-6"	31%-43%
	2'-0"	2'-0"	2'-0"	5'-6"	44%-81%
12" ϕ	2'-6"	2'-6"	3'-0"	2'-0"	4%-19%
	2'-6"	2'-6"	3'-0"	3'-0"	20%-29%
	2'-6"	2'-6"	3'-0"	4'-6"	30%-46%
	2'-6"	2'-6"	3'-0"	6'-6"	47%-77%
16" ϕ	3'-0"	3'-0"	3'-0"	7'-0"	78%-132%
	3'-0"	3'-0"	4'-0"	2'-0"	4%-17%
	3'-0"	3'-0"	4'-0"	3'-6"	18%-30%
	3'-0"	3'-0"	4'-0"	5'-0"	31%-46%
20" ϕ	3'-0"	3'-0"	4'-0"	7'-0"	47%-73%
	3'-0"	3'-0"	4'-0"	10'-0"	74%-157%
	3'-0"	3'-0"	4'-6"	3'-0"	4%-18%
	3'-0"	3'-0"	4'-6"	5'-0"	19%-30%
24" ϕ	3'-0"	3'-0"	4'-6"	7'-0"	31%-45%
	3'-0"	3'-0"	4'-6"	10'-0"	46%-73%
	3'-0"	3'-0"	4'-6"	13'-0"	74%-120%
	3'-0"	3'-0"	5'-0"	3'-0"	4%-13%
24" ϕ	3'-0"	3'-0"	5'-0"	5'-0"	14%-22%
	3'-0"	3'-0"	5'-0"	7'-0"	23%-32%
	3'-0"	3'-0"	5'-0"	9'-0"	33%-43%
	3'-0"	3'-0"	5'-0"	11'-0"	44%-56%
24" ϕ	3'-0"	3'-0"	5'-0"	14'-0"	57%-79%
	3'-6"	3'-6"	5'-0"	15'-0"	80%-129%



AUGUST 2005

CITY OF CHIND HILLS		Approved by:	THRUST BLOCKS	W-3
Revised: / /	by:			
Revised: / /	by:			
Revised: / /	by:	CITY ENGINEER		4 OF 5

NOTE:

- 1) ALL THRUST BLOCKS SHALL BE 500-C-2500 CONCRETE PER SEC. 2-12.04.
- 2) REBAR SHALL BE INTERMEDIATE GRADE DEFORMED BARS CONFORMING TO ASTM SPEC. A-615.
- 3) REBAR LAP LENGTH=18" MIN OR 36 x REBAR ϕ , WHICHEVER IS GREATER.
- 4) REBAR NOT REQUIRED FOR PIPE UP TO CLASS 200, EXCEPT FOR SHEAR RING BLOCKS AS NOTED.
- 5) HORIZONTAL THRUST BLOCKS, TEE & END BLOCKS, & SHEAR RING BLOCKS:
 - A) THE ALLOWABLE LATERAL BEARING PRESSURE AGAINST UNDISTURBED EARTH (P_p) USED IN DESIGN OF BLOCKS IS 333 LBS / SQ FT /FT OF DEPTH.
 - B) THE ALLOWABLE LATERAL BEARING PRESSURE WAS DETERMINED BY USING THE MINIMUM DESIGN PIPELINE COVER AS SHOWN IN THE THRUST BLOCK TABLES.
 - C) THE TOTAL RESULTANT THRUST FOR HORIZONTAL ANGLES WAS DETERMINED USING THE RELATIONSHIP

$$HT=2P \text{ PI}/4 D^2 \text{ SIN } \Delta/2$$
 WHERE HT= TOTAL HORIZONTAL THRUST, LBS.
 D= INSIDE DIAMETER, IN.
 P= INTERNAL PRESSURE, PSI.
 Δ = HPI, DEGREES.
- 6) VERTICAL BEARER BLOCK & VERTICAL ANCHOR BLOCK:
 - A) THE ALLOWABLE FOUNDATION PRESSURE AGAINST UNDISTURBED EARTH (P_p) USED FOR DETERMINING THE REQUIRED BEARER BLOCK IS 3000 LBS/SQ FT.
 - B) THE TOTAL RESULTANT THRUST FOR VERTICAL ANGLES WAS APPROXIMATED USING THE RELATIONSHIP

$$VT=P \text{ PI}/4 D^2 \text{ SIN}(\Delta=\text{TAN}^{-1} g/100).$$
 WHERE VT= TOTAL VERTICAL THRUST, LBS.
 D= INSIDE PIPE DIAMETER, IN.
 P= INTERNAL PRESSURE, PSI.
 Δ = VPI, DEGREES.
 g= GRADE DIFFERENCE, (%).

AUGUST 2005

CITY OF CHIND HILLS			THRUST BLOCKS	W-3
Revised: / /	by:	Approved by:		
Revised: / /	by:			
Revised: / /	by:	CITY ENGINEER		
			5 OF 5	